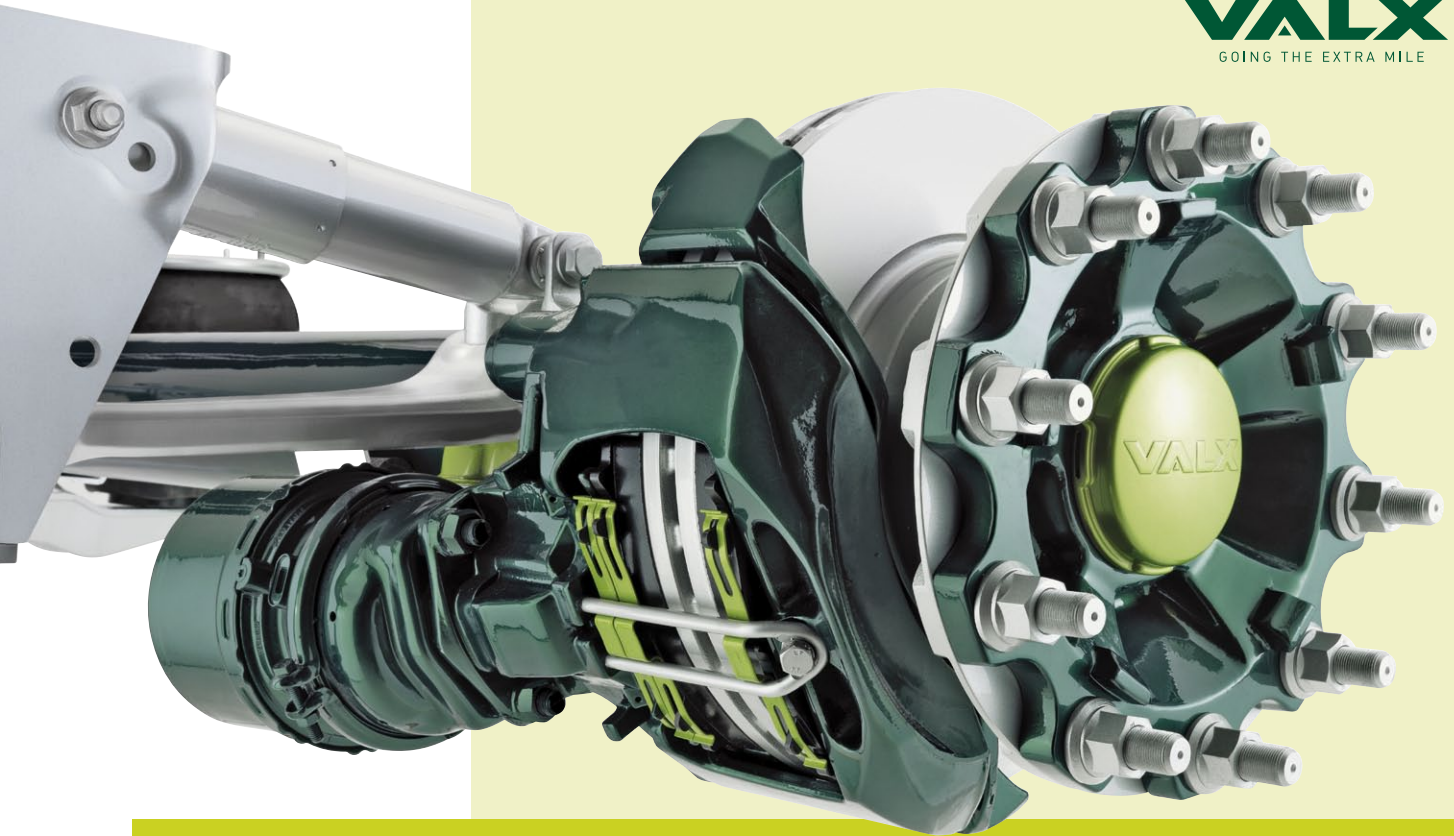


VALX delivers a new experience in trailer axle design. With no compromise in any vital area. Our axles are not the cheapest, and nor are they the lightest. But our pricing is very competitive with the established top brands. And our weight is within a few kilograms of the lightest. Which is highly acceptable in relation to the outstanding durability that we've designed in, built in and tested in. Durability that translates into high reliability and unmatched Total Cost of Ownership. That's what you'll experience with VALX!

Valx axles. The smart alternative.

VALX
GOING THE EXTRA MILE



VALX DISK 430 / 370

*Technical
specifications*

BEAM The axle is based on a one piece, extremely strong seamless, cold-drawn beam design. The non-welded beam structure eliminates risks of weakening or material degradation.

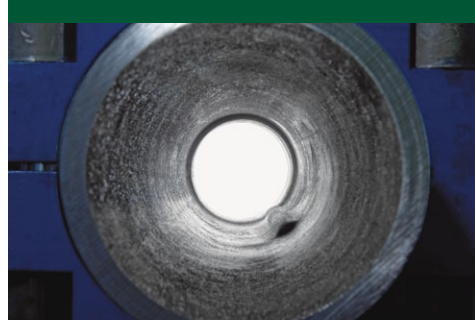
HUB The hubs offer a choice of zero or 120 mm offsets and 19.5 or 22.5 inch wheel sizes.

AIR SUSPENSION The specially developed VDL Weweler air suspension meets the VALX philosophy of light weight, low component count and minimal maintenance. A wide range of ride heights and offsets can be accommodated by only one type of shock absorber, air spring, hanger bracket and two different tail ends.

DISK Ventilated disks to VALX design ensure excellent brake cooling. A design optimised for wear and thermal behaviour, including thermal shock.

CALLIPERS WABCO's proven reliable single-piston technology has made the PAN range one of the most successful air disk brake ranges.

The axle is based on a one piece, extremely strong seamless, cold-drawn beam design in which the VALX groove is forged.



BEAM The VALX axle beam has a higher strength-to-weight ratio than any other in Europe, and forms the basis for long-term durability under tough operating conditions.

- Spindle journals have thickened sections, and are induction hardened and ground to increase life and minimise fretting
- Straightened after completion
- Large inner journal radius for maximum lifetime
- Cold-rolled threaded section for long life and minimal damage and pick-up
- Fully sealed tube
- Main axle beam assembly is fully E-coated for long-lasting corrosion protection

HUB Highly accurate CNC machining and reduced tolerances ensure accurate bearing pre-setting and an even pressure distribution across the bearing cups. The wide bearing spread minimises bearing loads and maximises bearing life, while reducing sensitivity to brake heat transfer.

- Designed and tested in Europe to accepted European standards
- Distinctive 'family' design
- Available in 10-stud variant with zero or 120 mm offset
- Made from modular graphite, ductile iron to EN1563:1997, EN-GJS-400-7

DISK BRAKE WABCO, with a 140-year track record, is a leader in heavy commercial vehicle brake solutions offering the optimum combination of weight and performance. Ventilated disks to VALX design ensure excellent brake cooling.

- Available in 19.5 and 22.5 inch sizes
- Ventilated design optimised for wear and thermal behaviour, including thermal shock
- High safety reserves with low fading behaviour
- Excellent performance due to high mechanical efficiency
- Attaches to the hub flange to improve thermal behaviour and support the hub
- Encapsulated guiding system and redundant sealing for high reliability
- Maintenance-free design with lifetime lubrication
- Extended service intervals with easy radial pad exchange

BRAKE CALLIPER The compact design is based on the careful combination of FEM (Finite Element Method) calculations and the patented single-piston technology. The result is significant vehicle weight improvement in all classes. The universal WABCO/VALX callipers are field-replaceable by other standard components for optimum serviceability. WABCO's PAN 19-1 and PAN 22-1 calliper types are standard fitment.

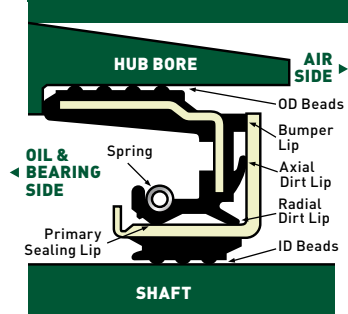


VALX AXLES	DISK 430	DISK 370
Axle load	9000 Kg	9000 Kg
Wheel size	22.5"	19.5" / 22.5"
Axle beam ⁽¹⁾	1 piece - ø 146 x 10	1 piece - ø 146 x 10
Hub offset	120 / 0 mm	120 / 0 mm
Wheelbolts and dimensions	10 - M22 x 1.5	10 - M22 x 1.5
Wheel Bolt Circle	335 mm	335 mm
Brake	WABCO	WABCO
Brake dimensions	Pan 22-1	Pan 19-1
Bearings	Timken : B-145662 - B-145649	Timken : B-145662 - B-145649
Bearing setting ⁽²⁾	Full Proof Preloaded	Full Proof Preloaded
Tyre mounting	Single	Single
Paint system	E-coating	E-coating

⁽¹⁾ Best strength / weight ratio

⁽²⁾ Separate tapered roller bearings

For the VALX axle hub SKF supplies the specially developed Scotseal PlusXL.



PAN 19-1 PAN 19-1 brings single-piston technology to the 19.5 inch class, setting new standards. Weight is only 32 kg, making it one of the lightest brakes of this size.

PAN 22-1 PAN 22-1 is a new industry standard. Pad surface has been made more effective and pad thickness has been increased by 2 mm, resulting in extended service intervals. Weight is a market-leading 36 kg.

- Well proven design with long service history
- Excellent field performance and bad road resistance
- Compact, lightweight design for easy axle adaptation and maximum payload
- Heat-shielded piston boots
- Common attachment method with all variants
- KTL (cathodic dip painting) corrosion-resistant coating
- Extended service intervals due to increased pad thickness (PAN 22-1)
- Spare parts widely available through the WABCO and VALX spare parts networks
- Easy to inspect and maintain

SEAL For the VALX axle hub SKF supplies the specially developed Scotseal PlusXL, made of high-temperature resistant, long-life HNBR rubber to exclude dirt and moisture from the wheel bearings. Together with the bearings themselves, the seals are retained in place by a circlip when the hub is removed, simplifying service and maintaining the integrity and cleanliness of the hub assembly.

- Specially designed multi-lip seal, common to all variants
- Spring-loaded primary lip seals grease in and keeps road dirt and water out
- Withstands high compression loads when the hub assembly is removed
- Unitized design protects sealing lips from damage
- Easy to fit and remove - one piece hand mounting
- NBR blend sleeve compound grips spindle and resists turning even at high temperature; allows seal re-use
- Widely available and supplied by a world leader in sealing technology

BEARINGS The bearing solution is based on two single-row preset tapered roller bearings, combining cost-effective maintenance with maximum performance and reliability with minimum total cost of operation. Optimised pre-setting maximises bearing life and brake performance.

- Widely available, high-capacity bearings
- Universal load line position
- Preloaded to maximise life and limit play for diskbrakes
- Bearings can be disassembled for inspection and replaced if necessary
- Hub retains the bearings when removed, protecting them from dirt entry



VALX AXLES

Seal ⁽³⁾

Air suspension

Clamped on axle beam ⁽⁴⁾

Ride height ⁽⁵⁾

Air spring ø

Air spring offset

L1 / L2

Hanger bracket height welded (bolted)

Hanger bracket bracing

Axle lift

Hubodometer

DISK 430

SKF 4 lip

Weweler MBS

Yes

210 - 420 mm

300 / 330 mm

0 / 25 / 50 / 65 / 90 mm

520 / 320 mm

235 (241) mm

flexible design

Optional

Optional

DISK 370

SKF 4 lip

Weweler MBS

Yes

210 - 420 mm

300 / 330 mm

0 / 25 / 50 / 65 / 90 mm

520 / 320 mm

235 (241) mm

flexible design

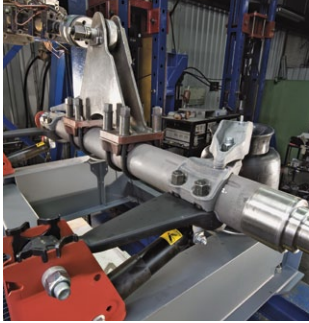
Optional

Optional

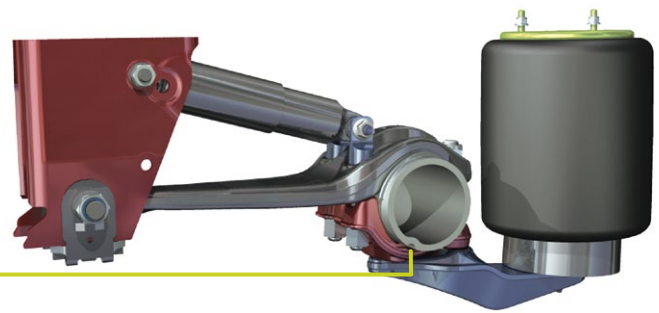
⁽³⁾ Wear parts inside

⁽⁴⁾ No welding for air suspension needed on axle beam

⁽⁵⁾ RH minimum is adjustable by fitting a bump-stop to the chassis of the trailer



The suspension mount, with a groove in the axle beam, uses no welds or U-bolts for maximum strength and durability of the axle.



AIR SUSPENSION

The suspension is clamped around the axle and held in place by a groove in the beam, offering a unique modularity in spring track, ride height and offset. This non-welded construction ensures maximum strength and improves the life of the axle.

- *New innovative design from a world suspension leader VDL Weweler*
- *Maximum axle load 9T; lightest 9T spring beam suspension available*
- *Ride height range 210-420 mm with only two different tail ends*
- *Offset 0-25-50-65-90 mm with one air suspension type without extra parts*
- *Suspension spring clamps to the axle tube without welding or U-bolts*
- *Optional bolt-on, non-welded hanger bracket and bracing*
- *Lightweight construction (128 kg) with low component count for a wide range of ride heights and offsets*
- *Single damper type with high temperature viton seals for all suspension variants providing optimal critical damping*
- *Realignment-free*
- *Maintenance-free, robust, small diameter bushing*
- *Tapered spring profile for good roll stiffness and low single-wheel vertical stiffness*
- *Meets accepted criteria for road-friendly suspensions*
- *Damper works as a check strap*
- *Optional: bolt on-mounted axle lift*
- *Optional: one type splitter for the MBS range*



ORDER

VALX axles are available from stock or for early delivery from the VALX works in Valkenswaard, the Netherlands. For further details about products, applications, specifications and availability, please contact us! We'll provide you with fast and detailed support.

Visit our website www.valx.eu to discover all information about VALX! The smart alternative.



VALX bv

visiting address

John F. Kennedylaan 51
Valkenswaard
The Netherlands

postal address

P.O. Box 2
NL-5550 AA Valkenswaard
The Netherlands

phone +31 (0)40 2088444

fax +31 (0)40 2079757

email info@valx.eu

web www.valx.eu

technical support

email support@valx.eu

sales support

email sales@valx.eu